

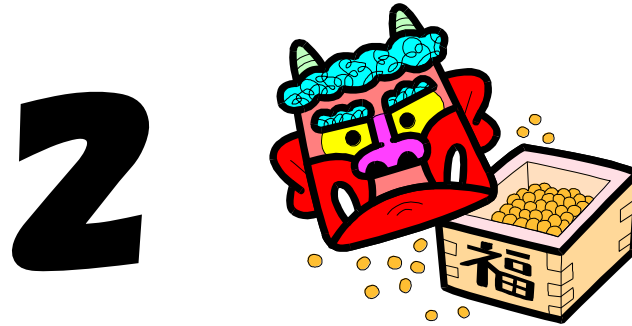
# What's New?

Niihama City

No.210

February 2013

Published by SGG Niihama



## A (Relatively) New Face in Saijo

**Stephen Grabowski**

Greetings! Let me introduce myself. My name is Stephen Grabowski. I am the (relatively) new Coordinator for International Relations in Saijo City Hall. Now that I have emerged from my books after the Japanese Language Proficiency Test, I have finally been able to write this introduction to all of you in Niihama (or where you happen to be reading this).

The easiest way to describe me is to say that I am a tall, very white, 22 year old who likes racket sports and Aikido. I came to Saijo directly after I graduated from Carleton College in Northfield, MN. I studied Japanese (and a year of Chinese) in College, but majored in Computer Science. If you stop by Saijo, you might see into me running around Saijo High School or heading to practice Aikido with a bunch of much older, much more skillful people at the gym.

As you can probably tell, I have been enjoying my time here in Saijo. My work has been quite rewarding. In fact, we will be starting a new book club this February. We will be reading chapters from "Globalization: a Very Short Introduction" about topics like culture, communication, economics, politics, and technology and discussing their impact on life in Ehime. I hope that this meeting will become another avenue for encouraging a cross-cultural exchange. They don't call us Coordinators of International Relations for nothing. If you are interested in global trends and internationalization, we will be holding weekly English discussions, so I encourage you to come check it out!

Outside of work, I have had chances to climb Mt. Ichizuchi, visit museums, participate in festivals and generally get to know the people in our corner of Ehime. I spent almost all of my previous time in Japan in Nagoya studying at Nanzan University. I like the laid-back atmosphere. In fact, aside from the mountains, it reminds me of my hometown back in the United States. I grew up in Iowa City, Iowa and the people I have met in Saijo have much in common with my friendly Iowa neighbors. Maybe a story would explain things best. One day, my family and I were moving a piano into our house. It was an ordinary summer day and, within an hour of bringing the piano home, three of our neighbors had stopped by in their pickup trucks to offer to help us move it in. I think that people here in Ehime also have that neighborly mentality.

During my free time, I have also taken the opportunity to travel to Kyoto, Osaka, and Tokyo. My favorite spot so far is Nanzen-ji in Kyoto. The leaves had just changed color and were a brilliant red. Navigating through the crush of tourists was not easy, but the view was certainly worth it. In fact, despite the number of tourists, the temples were remarkably tranquil. I can only imagine what they look like in the winter. Perhaps I'll have a chance to find out soon!

In addition to working, travelling, and sports, I enjoy studying languages. I have recently been picking up Chinese. Getting over the four tones was a bit of a challenge, but I was pleasantly surprised to find that Chinese characters typically only have one reading. In fact, I was shocked. Who would have thought there were characters that didn't have at least three? When I came to Saijo, I imagined that it would be difficult to find people who could speak Chinese, but it turns out there is a group right down the street from my house who studies Chinese. They have been very welcoming. In fact, I am grateful to everyone I have met so far in Ehime for making me feel at ease while I transition into my role in Saijo City Hall.

I am looking forward to another six months of learning from and with all of you here in Ehime. Whether it is Japanese, Chinese, or English, I always enjoy learning new things from new people. So if you are in Saijo, stop by the City Hall and say hello!

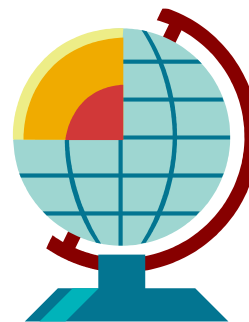
Stephen Grabowski  
Saijo City Office  
International Affairs Section  
Coordinator for International Relations

## February Event

### ★2/3 and 2/17 (Sun.) Sunday Market

Time: 7:30 ~ 12:00

Place: Street on east side of Niihama Central Park



### ★2/3(Sun.) A fire fighting training undertaken by fire fighters

Time: 9:00 ~ 12:00

Place: Yamane Park Ground

(If it rains, it will be held at Niihama Bunka Center at 10:30.)



### ★2/17(Sun.)The 23rd Niihama Global Party

If you are looking for a party with a lot of fun, please join the Global Party, where you can have a good time talking, tasting various sweets, enjoying performances on stage and meeting people from different cultures.

Date : Sunday, 17th February, 2013

Time : 13:00 to 15:30

Venue : Niihama Women's Plaza

Admission : ¥500/person to be paid at the reception.

#### Special Opportunity!

Experience an earthquake simulator and building a smoke simulator. Try using a fire extinguisher.

Organized by : The Global Party Association & SGG Niihama    Sponsored by:  
Niihama City Office,  
Niihama Board of Education and EPIC



You can read on the Web.

**\*What's New?**

**\*Garbage and trash Collection Calendar**

**\*Information living in Niihama**

Click  <http://www.city.niihama.lg.jp/english/>

**Clair:\*Multilingual Living Information**

<http://www.clair.or.jp/tagengorev/en/index.html>

## "Japan Tourist" Introduces Matsuyama

(Ehime Shimbun November 2012)

"Japan Tourist", a website written in English, introduces sightseeing spots in Matsuyama and Ehime and specializes in targeting wealthy foreign people and foreign residents in Japan.

Articles and photos are contributed by Rod Walter, a writer from Britain who lives in Matsuyama. The site introduces hot spots and restaurants from a non-Japanese perspective. The site is managed by Metropolis, which set up the special section "Ehime Special".

Fifteen items are introduced on the site, including Dogo-Onsen's main building, Matsuyama castle, Ishite-ji Temple, Haiku culture and the seafood-based cuisines of the Seto Inland Sea. The Seto Inland Sea Route, which has become very popular because of the beauty of its many small islands, is shown along with the historical background of the route.

Mr. Walter adds, "The traditional old house in Mitsu is a valuable heritage resource of a world standard. I chose places where you can actually experience and feel something wonderful. I hope visitors not only from abroad but also Japanese people will enjoy it.

<http://japantourist.jp/special/ehime>

### Exploring Restaurants:

Noodle Niihama

No. 9

## Bonkura 凡蔵

by Michael Newlin

Blockhead or Lunkhead is the rough translation for the name of this restaurant. Based on the name alone, it is worth trying this udon shop. They concentrate on creating the perfect texture in their noodles and it shows in their Kakiage and Nabeyaki udon dishes. Even the oden is good; warning, the mustard is good but surprisingly spicy. So, if you want a relaxed and casual lunch or dinner, give the blockhead a chance. Open for lunch and dinner.

Directions: Across the street from Nikko Pachinko (AKA: Nikkotown near Showa-dori: 新居浜市泉池町 9-35)

Phone: 0897-37-5551. Hours: 11am-8pm; closed Wednesdays.

## MOVIE

TOHO CINEMAS Niihama (AEON Shopping Center)

December 21 ~	LES MISERABLES	2D	English
January 11 ~	TAKEN 2		English
January 12 ~	Looper		English
January 18 ~	TED R15+		English / Dubbed
January 19 ~	LIFE OF PI	3D • 2D	English, 3D Dubbed
February 1 ~	JACK REACHER		English / Dubbed
February 14 ~	A GOOD DAY TO DIE HARD		English / Dubbed
February 15 ~	ZERO DARK THIRTY PG12		English

Information Service

Internet: <http://niihama-aeonmall.com>

Tape (24 hrs): 0897-35-3322 (in Japanese)

Movies might be changed without notice, so please check beforehand.



<Contributed by Adam Schartup>

SGG would welcome any suggestions, questions or ideas for monthly articles. email: [yukiko-m@shikoku.ne.jp](mailto:yukiko-m@shikoku.ne.jp)

[kasi4386@plum.ocn.ne.jp](mailto:kasi4386@plum.ocn.ne.jp)

[sheep@abeam.ocn.ne.jp](mailto:sheep@abeam.ocn.ne.jp)

\*The editors for this month are E. Kato & T. Oishi

# ONE POINT JAPANESE

“～んです”

A : **今から** ランチに 行くんですが、いっしょに **行きませんか**。

Imakara ranchi ni ikun desu ga, issho ni ikimasen ka.

(Now I'm going for lunch, but won't you come with me?)

B : **どこへ** 行くんですか。Doko e ikun desu ka. (Where are you going?)

A : **すぐ** 近くに ワンコインランチが **できる** ところが **あるんですよ**。

Sugu chikaku ni wankoin ranchi ga dekiru tokoro ga arun desu yo.

(There's a place nearby where you can have lunch for 500 yen.)

B : **へえ**、**安い**ですね。じゃ、**わたしも** **行きます**。

Hē, yasui desu ne. Ja, watashi mo ikimasu.

(Really? That's cheap! OK, I'll go too.)

A : **17日に**、**グローバルパーティー**が あるんですが、**参加**しませんか。

Jūshichi nichi ni gurōbaru pāti ga arundesu ga, sankā shimasen ka.

(The Global Party is on February 17; how about attending it?)

B : **どこで** あるんですか。Doko de arun desu ka.

(Where will it be?)

A : **ウィメンズプラザ**です Wimenzu puraza desu. (At Women's Plaza.)

**外国人**も **たくさん** **来**ますよ。Gaikokujin mo takusan kimasu yo.

(A lot of foreigners will come too.)

B : **面白**そうですね。行って **みよう**かな。Omoshirosō desu ne.

Itte miyō ka na.

(It sounds interesting. Maybe I should go.)

A : **前日**に **いろいろな** **国の** **スイーツ**を 作るんですが、**よかったら**

**来**て **み**ませんか。Zenjitsu ni iroiro na kuni no suitsu o

Tsukurun desu ga, yokattara kite mimasen ka.

(The day before, we're going to make sweets from various countries. If you'd like, you're welcome to come.)

B : **お菓子**を **作**ったことが ないんですが、**大丈夫**でしょうか。

Okashi o tsukutta koto ga nain desu ga, daijōbu deshō ka.

(I've never made sweets before, but is it OK?)

A : **もちろん**です。Mochiron desu.

(Of course.)

A : **今**、**忙**しい? Ima isogashi? (Are you busy now?)

B : **ううん**、**どう**したの? Uun, doshita no? (No, what's the matter?)

A : **あのう**、**日本語**で **メール**を 送りたいんだけど、**自信**が **ない**ので

**ちょっと** **み**てもらえない?

Anō, nihongo de mēru o okuritain da kedo, jishin ga nai no de

chotto mite moraenai?

(I want to send e-mail in Japanese, but I don't have any confidence.

Could you give it a quick check?)

B : **いい**よ。・・・**す**ごい!**完璧**!! Ii yo. .... sugoi! Kanpeki!!

(OK. .... Great!! Perfect!!)

< by Niihama Nihongo no Kai >

NNK also provides Japanese lessons for foreigners living in Niihama.

Feel free to contact us at: Tel 0897-34-3025 (Manami Miki).

e-mail : manami-m@js6.so-net.ne.jp