

MOVIES

TOHO CINEMAS Niihama (AEON Mall)

March 3 ~	The Fabelmans	(PG12)	Sub
March 3 ~	Everything Everywhere All at Once		Sub
March 17 ~	Shazam! Fury of the Gods		Sub/ Dubbed
March 24 ~	Lyle, Lyle, Crocodile	(PG12)	Sub
March 31 ~	Dungeons and Dragons Honor Among Thieves		Sub
April 7 ~	Knock at the Cabin		Sub
April 14 ~	Missing	(PG12)	Sub
April 28 ~	The Super Mario Bros. Movie		Dubbed

Due to the new coronavirus infection, movies might be changed without notice. So please check the homepage for information.

Information Service
Internet: niihama-aeonmall.com
Tape (24hrs) :050-6868-5019 (in Japanese)



This newsletter is published by SGG, a volunteer group that helps foreigners living in Niihama. If you need any advice, information, or support, please contact SGG.

SGG would welcome any suggestions, questions, or ideas for monthly articles.

email: sheep@abeam.ocn.ne.jp
yukiko-m@shikoku.ne.jp
k.toshiko.0305@gmail.com
hayatine@nbn.ne.jp

* [The editors for this month](#) are Naomi Negoro & Taeko Oishi.

ONE POINT JAPANESE

「敬語」で話しましょう No.2 Speaking Using Honorifics

A : こんにちは、先生。Konnichiwa, sensei.
(Hello!)

B : ああ、グエンさん、いらっしゃい。よく来ましたね。

Aa, Guen san, irasshai. Yoku kimashita ne.
(Hey Guenn! Come in! Thank you for coming.)

A : お久しぶりです。

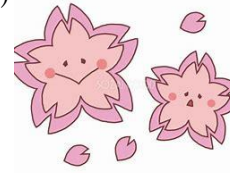
Ohisashiburi desu.
(It's been quite a while.)

お会いできるのを楽しみにしていました。

Oaidekiru no o tanoshimi ni shite imashita.
(I've been looking forward to seeing you.)

B : わたしもですよ。ゆっくりしていいね。

Watashi mo desu yo. Yukkuri shite itte ne.
(Me too! Make yourself at home!)



A : 今度の日曜日、お時間がありますか。

Kondo no nichiyōbi ojikan ga arimasu ka.
(This coming Sunday, do you have some time?)

B : たぶん、家にいると思いますよ。どうしたんですか。

Tabun, uchi ni iru to omoimasu yo. Dō shitan desu ka.
(Probably. I think I'll be at home. What's up?)

A : 四月から新しい仕事がはじまるので、色々お聞きしたいとおもっています……。

Shigatsu kara atarashī shigoto ga hajimaru node, iroiro okikishitai to omoimashite ...

(My new job starts in April, and I have a number of things I thought I'd like to ask you.)

お宅に伺ってもよろしいでしょうか。

Otaku ni ukagattemo yoroshī deshō ka.
(Would it be alright if I came to your house?)

B : いいですよ。じゃあ、1時頃に来てください。待ってますよ。

Ī desu yo. Jā, ichi ji goro ni kite kudasai. Mattemasu yo.
(That'd be fine. Then, come by at about 1 p.m. I'll be waiting!)



< by Niihama Nihongo no Kai >

NNK also provides Japanese lessons for foreigners living in Niihama. Feel free to contact us at: Tel: 0897-65-1579.
e-mail: niihamashikokusai@gmail.com
(Niihama International Center)

What's New?

Niihama City

No.332

April 2023

Published by SGG Niihama



The Global Party

Fergus Andrew Adderley

Niihama is a very welcoming city. As I walk my dog in Takinomiya park, nearly every person greets me with a konnichiwa. I find that the people who live in small towns are more easy to start a conversation with, whereas people in Tokyo will go to lengths to avoid having any form of contact with strangers.

You can make new friends anywhere you go in Niihama, unfortunately if your Japanese isn't good enough to maintain a conversation past introductions, it could be hard to keep those friends. This is exactly what happened to me. As I have only been living in Japan for about 8 months, my Japanese is understandably not so good as most of my conversations are with people who I met for the first time. I'm fortunate enough to make friends with a few of the SGG members, and although they are lovely people who help me with my goal of learning Japanese, none of them are my own age or with the same interests.

I thought I would go through my time in Niihama without having someone to go to karaoke or play smash bros with, but the global party changed all that. Finally I could meet people in the same boat as me and get past the basic introductions,

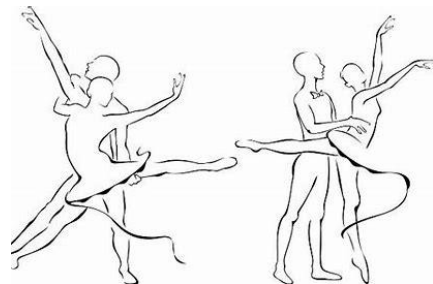
every person I spoke to talked like we were old friends despite having just met them for the first time. I met someone I can play videogames with, I met someone I can sing karaoke with, I met someone I can go hiking with, I even met someone who wants to support me with my dream of opening my own business. The global party completely changed my Niihama experience, I didn't even realize there were that many foreigners living here.

I had no idea what to expect coming to the global party but I was pleasantly surprised, not only by all the friendly people but by the entertainment. Not only was it a great way to experience songs and dance from many cultures, but the scale of the performances just kept getting bigger and better. I had been asked to perform at the global party and I regret not doing it as I would be honored to be part of such an amazing production.

Thank you to everyone working behind the scenes to bring together such an amazing event, it really is a beautiful way to bring people together and learn about other cultures. The global party really is Niihama's hidden gem.



I'm from Australia and I'm an English/ballet teacher here in Niihama. Before coming to Japan I was working as a professional ballet dancer in Germany. I have been dancing since I was 3 years old, but've since hung up my ballet shoes to come and start a family with my wife in the safest country in the world. I attended the 2023 Niihama global party and I would like to share my experience with you.



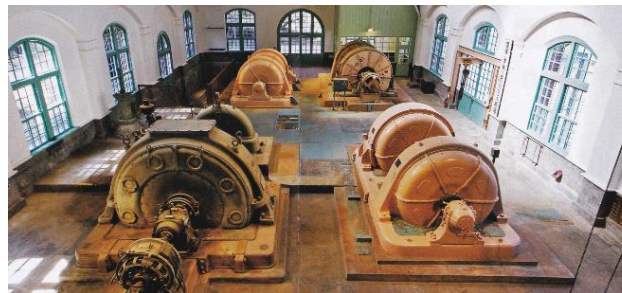
Former Hadeba Hydroelectric Power Station Revived after 110 years

(Monthly city news, March 2023)



A beautiful, western-style red brick building sits across the river from Minetopia Besshi. It is the former Hadeba Hydroelectric Power Station, one of the industrial heritage sites of Besshi Copper Mine. It is also a national registered tangible cultural property. The power station prompted the modernization of the mine, while playing a significant role in the development of mechanical and chemical industries derived from the copper mine.

Aseismic reinforcement for the building began in 2018 by Niihama city, and the building was finally open to the public on Tuesday, March 28th. Inside the building, a hydroelectric generator made by German maker Siemens AG is on display, just as it had been when the original building was founded, and you can take a tour through the traces of the penstocks and spillway. You can learn about the history of the power plant and its historical significance.



Open: 9:00 AM-5:00 PM
Free Admission

Besshi-Dozan Cultural Heritage Department
TEL: 0897-65-1236

Be Eco-friendly in Everyday Life: Start with what you can do.

(From the monthly City News, February, 2023)

Recycling and not littering are important measures for reducing plastic waste. And it is even more important that we reduce the usage of plastic products as much as possible. Why not start by consuming less plastic bottles?

Also, carrying a personal spoon and avoiding disposable plastic spoons at the convenience store is a very effective step to becoming eco-friendly.

We should all lead eco-friendly lives to protect our beautiful city Niihama.



April Events

☆ 4 / 23 (Sun) Sansan Market

9:00~12:00 Noborimichi Arcade

Many kinds of local foods: fresh vegetables, fruits, meat, fish, and processed foods for sale.



Online Information in English from Niihama City

☆ A Guide for Living in Niihama



☆ The Niihama Medical Institution Map



☆ How to Sort Your Trash and Garbage



☆ What's New? in English



☆ Niihama Tourist Information



<https://niihama.info/>

☆ A Daily Life Support Portal for Foreign Nationals