

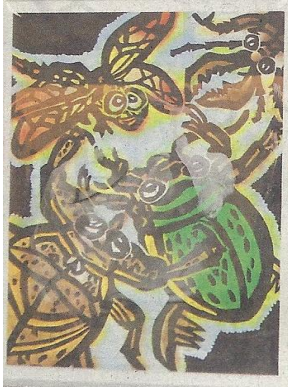
What's New?

Niihama City

No.252

August 2016

Published by SGG Niihama



8

Autistic Woodblock Print Artist Yoshinari Ishimura

Won the Grand Prix

(From Ehime Shimbun April 1, 2016)

Mr. Yoshinari Ishimura, a 21 year-old woodblock-print artist from Eguchi-cho, Niihama, won the Grand prix in the section for the general public in the contest held by the Ministry of Environment. Mr. Ishimura has autism. His work depicting insects living together in a beautiful local forest will be on the front cover of the 2016 White Paper of the Ministry of Environment. The ministry has publicly collected pictures for its white paper every year since 1999. The main theme for this year is “Eco-friendly Society” and 71 works were submitted to the general people’s section. His awarded work will be used for the front cover of the White Paper and for a poster used to spread awareness about environmental protection.

Mr. Ishimura got interested in a woodblock-printing in his art class when he was a student at Niihama Commercial High School. After graduating high school, he energetically worked in his studio and clinched many prizes in various art contests around Japan and the world. He plans to hold his own exhibition at the Prefectural Art Museum this September. He loves insects very much and his awarded work shows a dragon fly, a stay beetle, a diving beetle and a giant water bug. He made his work by looking at real insects and pictures in illustrated books, inspired by his

wish to protect the environment of mountainous areas.

At the Ministry of Environment in Tokyo, he was awarded for a certificate of merit by the Minister Tamayo Marukawa on March 30. She had this to say, “His work is very impressive and I feel the vitality of living creatures.” Mr. Ishimura said, “I am so happy.”



Industrial Sightseeing in the Eastern Part of Ehime

Toyo, the eastern region of Ehime, is the biggest industrial zone in Shikoku. Industrial products, food, and manufactured goods essential for our daily life are made in Toyo and sent all over Japan.

Let us introduce a facility where you can experience the industry of Ehime by seeing, shopping and eating. How about visiting and having some hands-on fun?

Factory Tour of Asahi Beer Brewery

This large scale beer brewery is eco-friendly and the waste produced in the factory is 100% recycled.

The model 21st century factory is friendly to humans and to the environment. The special guide nicely explains the process of manufacturing high quality beer. After the guided tour, you can enjoy the tasting of beer and soft drinks made on site. You have the option of tasting the freshest “Extra Cold” (Super Dry at below zero temperature [-2°C~0°C]). You can also enjoy Mongolian mutton barbecue, seafood or meat dishes at the restaurant next to the brewery: Asahi Beer-en Iyo Saijo (TEL: 0897-53-2277).

Asahi Beer Brewery

〒793-0003 Hiuchi 2-6 Saijo

TEL: 0897-53-7770 FAX: 0897-53-7799

<http://www.asahibeer.co.jp/factory/brewery/>



Biological Toilet on Old Besshi Trekking Trail

(From Ehime Shimbun May 19, 2016)

A biological toilet has been completed at “Diamond Water” open place on the Old Besshi Trekking trail. This bio-toilet is designed to be eco-friendly to the Old Besshi, which has some valuable industrial heritage sites of Besshi Copper Mine. Niihama City Government has rebuilt it because the former one became too old to use.

The 24m² shed housing the bio-toilet is about one hour walk from Hiura, the starting point of the trekking trail and has two apparatus: one for only women and the other for both men and women. Its trial period started last fall and it has offered service for climbers since March 16. But it is closed from December 1 to March 15 due to freezing.

You are supposed to pedal a bicycle next to the toilet more than 20 times forward and more than 10 times backward in order to mix your excreta, toilet paper and sawdust and let the microorganisms decompose it. The used sawdust is recycled as fertilizer because it contains nitrogen and phosphoric acid. Mr. Kazunobu Soga, a farmer in Mitoyo Kagawa, who has enjoyed mountain climbing for 40 years, appreciated it highly and had this to say, “It was my first time using a bio-toilet. It is very clean and located in a convenient place. This is an amazing system for both nature and humans to co-exist. We must respect nature because it has been the master of the earth much longer than humans.


Niihama City made use of ¥3.570 million, which Sumitomo Metal Co., donated to be used for environmental preservation of the Old Besshi Trekking Trail. The total cost was ¥39.56 million.



Information in English & Chinese on the Web

***What's New?**

***How to sort garbage and trash**

Visit  <http://www.city.niihama.lg.jp>

Clair:*Multilingual Living Information

<http://www.clair.or.jp/tagengorev/en/index.html>

How about Swimming or Playing with Dolphins?

(From Hoo-JA!, June 25, 2016)

“Dolphin-Farm Shimanami” is along the Shimanami Kaido on Hakata-jima Island, about one-hour drive from Niihama. Since opening last April, it has been a new spot to watch, pet, or swim with dolphins. Four bottle-nose dolphins and a nosed dolphin are bred there. You can park your car at “Roadside Station Hakata SC Park” next to the dolphin farm. There are three programs you can enjoy:

” The program for watching” where you can watch dolphins closely from the floating pier.

“The program for petting” where you can pet and kiss them. (Reservation needed, 5,000 yen / 30 minutes). A 10-minute orientation is required before petting.

“The program for swimming” for those not satisfied with just petting, where you can swim with them. (Reservation needed, 9,000 yen / 60 minutes). You can have amazing time with dolphins. A 20-minute orientation is required before swimming. The instructor kindly explains about the kinds of dolphins, their features and the difference between males and females.

3 Programs

Watching Grown-up (junior high school student and over) : ¥500 Child (4 yrs. and over) ¥400	9:00-17:00
Petting ¥5000 (Reservation needed) 30 minutes (10 minutes orientation and 20 minutes petting)	① 10:00- ②11:00- ② 13:00- ④ 14:00 ⑤ 15:00- ⑥ 16:00-
Age: 4 years old and over. Students younger than elementary age should be accompanied by a guardian	
Swimming ¥9000 (Reservation needed) 60 minutes (20 minutes orientation and 40 minutes swimming)	① 9:40- ②10:40- ③13:40- ④ 14:40 ⑤ 15:40-
Age: 4 years old and over. Students younger than elementary age should be accompanied by a guardian	

Time: 9:00 - 17:00

Tel: 0897-72-8787

<http://www.df-shimanami.com>



MOVIE

TOHO CINEMAS Niihama (AEON Mall)

July 1 ~	Alice Through the Looking Glass	2D English • Dubbed / 3D Dubbed
July 9 ~	Independence Day Resurgence	2D English • Dubbed / 3D Dubbed
July 16 ~	Finding Dory	2D Dubbed
August 11~	The Jungle Book	2D English
August 11~	The Secret Life of Pets	2D English
August 11~	X-Men Apocalypse	2D English
August 19~	Ghost Busters	2D English
August 26~	Teenage Mutant Ninja Turtles: Out of the Shadows	2D English

Information Service

Internet: <http://niihama-aeonmall.com>

Tape (24 hrs): 050-6868-5019(in Japanese)

Movies might be changed without notice. Please check.



August Events

8/7(Sun) 16:00-21:00 "Niihama Summer Festival"

At Showa-Dori, Noborimichi-Sunroad

Competitive Performance of Taiko-Dais, etc.

Tel: 0897-37-6677

8/21(Sun) 10:00-15:30 "Summer Festival in Mintopia Besshi"

At Mintopia Besshi

Japanese Drum Performance, Bingo Game, etc.

Tel:0987-32-4028



SGG would welcome any suggestions, questions or ideas for monthly articles.

email: kasi4386@plum.ocn.ne.jp
sheep@abeam.ocn.ne.jp
yukiko-m@shikoku.ne.jp

*The editors for this month are E.Okada & Y.Miki

ONE POINT JAPANESE

“~ところ”

No.2

(電話で) (On the phone)

A : 今から ランチに 行きませんか。

Imakara ranchi ni ikimasen ka.

(How about going for a lunch now?)

B : あー、残念！ちょうど これから 食べるところなんです。

Aa,zannen! Chodo korekara taberu tokoro nan desu.

(Ah, too bad! I'm just going to eat lunch now.)

それに、オリンピックの試合を見ているところだし…

Soreni,orinpikku no shiai o miteiru tokoro da shi...

(And I'm just watching an Olympic match...)

A : じゃ、また今度。

Ja, mata kondo.

(Next time, then!)

(デートの待ち合わせ場所で) (At a place waiting for a date.)

A : 遅くなって、ごめんね。

Osokunatte, gomen ne.

(Sorry to be late.)

B : 大丈夫。わたしもさっき来たところだから。

Daijobu! Watashimo sakki kita tokoro dakara.

(That's Ok.I just got here a minute ago.)

A : あれ？Cさんは？

Are? C-san wa?

(Eh? Where's C-san?)

B : たった今、帰ったところですよ。

Tatta ima, kaetta tokoro desu yo.

(She just now left to go home.)

A : えーっ、一緒に帰ろうと思っていたのに…

Ee, issho ni kaero to omotte ita noni...

(Oh, no! I was going to go home with her...)

B : まだ 駐車場あたりに いるかもしれませんよ。

Mada chushajo Atari ni iru kamo shiremasen yo.

(She may still be around the parking lot.)

A : ありがとう。行ってみます。

Arigato. Itte mimasu.

(Thank you, I'll go look.)

<by Niihama Nihongo no Kai>

NNK (Nihongo no Kai) also provides Japanese lessons for foreigners living in Niihama. Feel free to contact us at:

Tel: 0897-34-3025 (Manami Miki).

E-mail : manami-m@js6.so-net.ne.jp